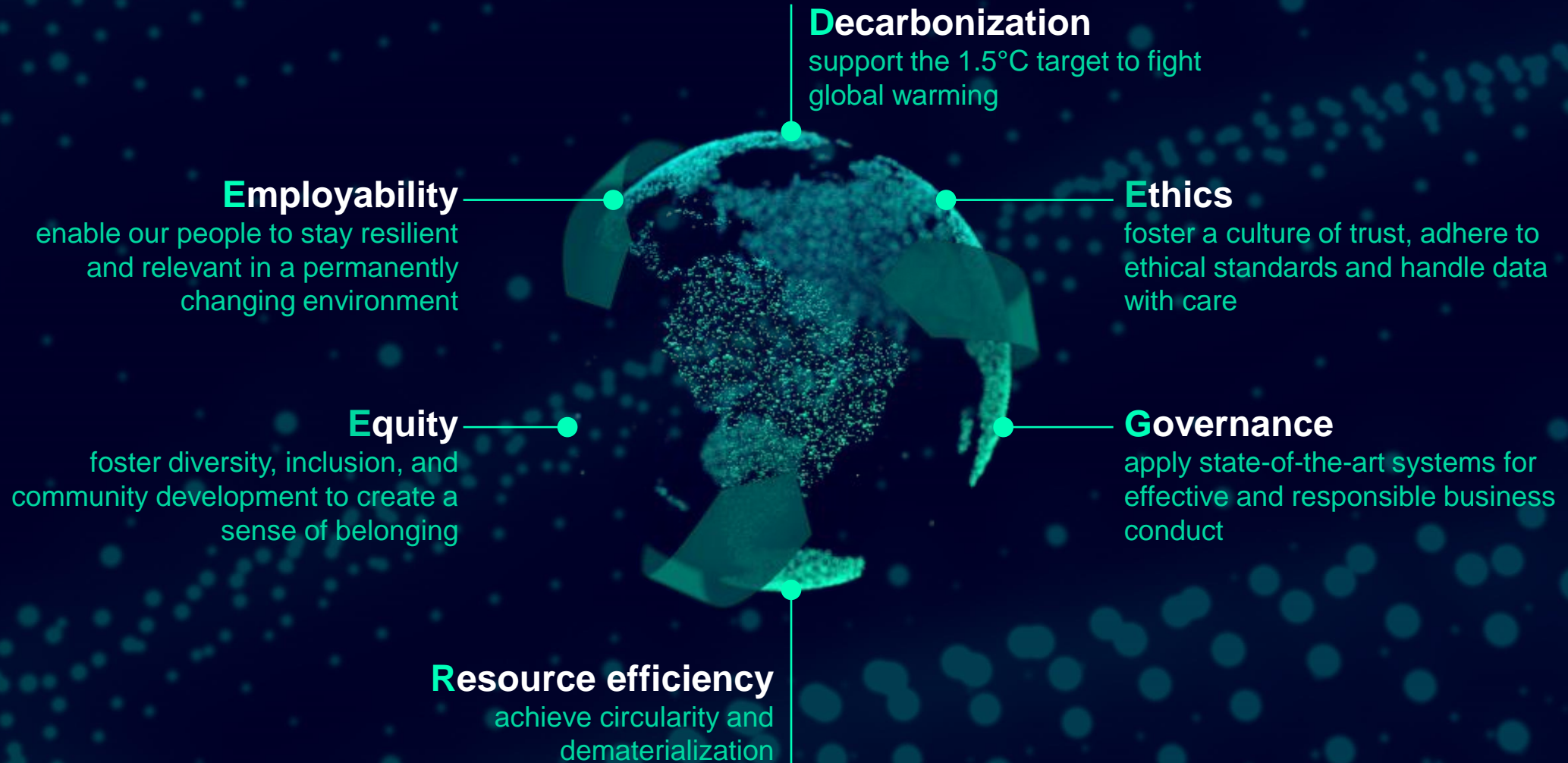




# Living Circular Economy

Connection between reuse - integrated waste management and  
“Zero waste packaging solutions”

# Our DEGREE framework sets clear priorities for Sustainability at Siemens



# Our DEGREE framework is substantiated with clear ambitions

## Decarbonization

- Net zero operations by 2030 in line with SBTi pathway
- Net zero supply chain by 2050, 30% emissions reduction by 2030

## Ethics

- Striving to train 100% of our people on Siemens' Business Conduct Guidelines every three years

## Governance

- ESG secured supply chain based on supplier commitment to the Supplier Code of Conduct
- Long-term incentives based on ESG criteria<sup>1</sup>

## Resource efficiency

- Next-level robust eco-design for 100% of relevant Siemens product families by 2030
- Natural resource decoupling through increased purchase of secondary materials for metals and resins
- Circularity through waste-to-landfill reduction of 50% by 2025 and towards zero landfill waste by 2030

## Equity

- 30% female share in Top Management by FY 25
- Access to employee share plans: maintain high level and expand globally to 100%<sup>2</sup>
- Global commitment to the New Normal Working Model

## Employability

- Double digital learning hours by 2025
- Access to employee assistance program: maintain high level and expand globally to 100% by 2025
- 30% improvement in Siemens' globally aggregated LTIFR<sup>3</sup> by 2025

<sup>1</sup> Assessed on the basis of a Siemens internal ESG/Sustainability index, incl. Customer Net Promoter Score, CO<sub>2</sub> Reduction, Training Hours

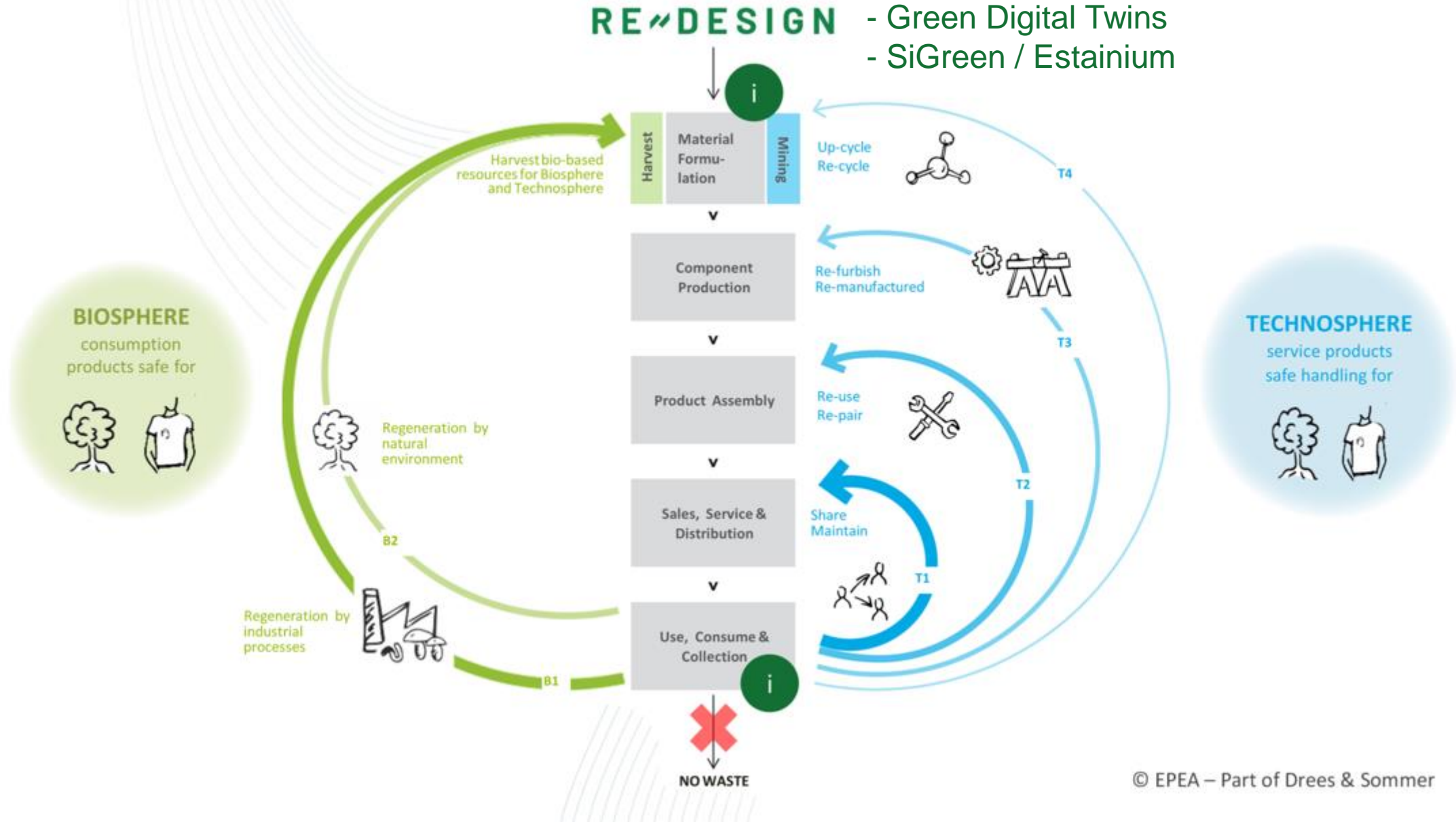
<sup>2</sup> Where legally possible and reasonable

<sup>3</sup> LTIFR: Lost time injury frequency rate (of Siemens employees and temp. workers) baseline FY2020

# Circular Economy - Cradle to Cradle®

## Robust Eco Design with

- Green Digital Twins
- SiGreen / Estainium



# Type of waste we handle in our reUse management



## What:

- metals
- wood
- electronic waste
- IT hardware
- machines and devices
- office and business equipment
- packing materials
- plastics
- chemicals
- construction waste
- residual waste
- waste water

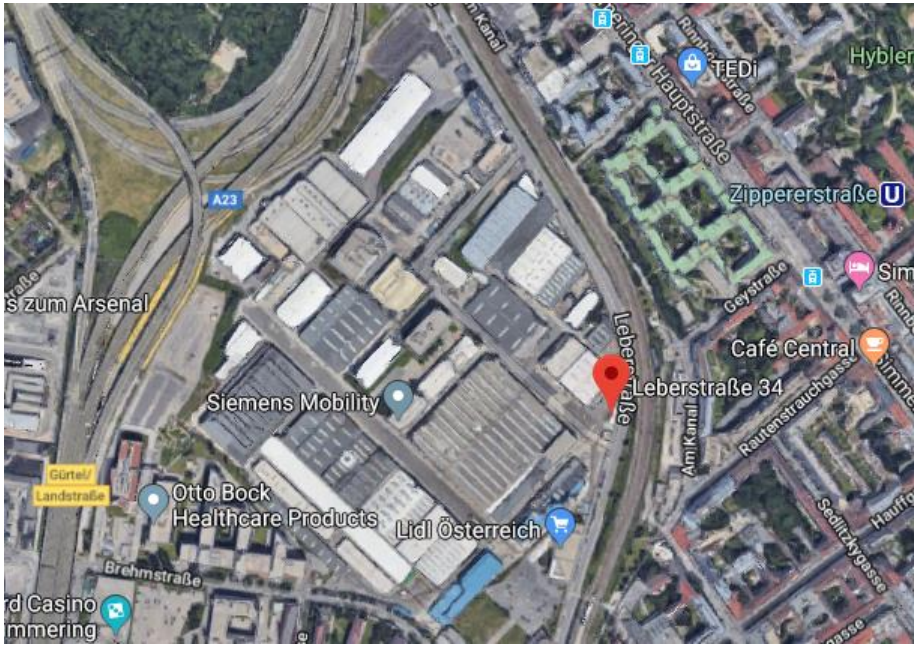
## Who:

- Manufacturing plants
- Project business
- Real Estate
- IT





## Siemens Mobility Austria GmbH, 1110 Vienna



Industrial Waste: ~ 30%  
Recyclables: ~ 50%  
Hazardous Waste ~ 20%  
**Total Waste Volume: 1.856t / year**



Metals



Wood 576t



Chemicals t



Ind.waste

### CoC – Metro, Light Rails

Site Area: 174.556m<sup>2</sup>

Building Floor Area: 102.857m<sup>2</sup>

2000 – 2500 Employees

Production Sites

Car Body, Surface, Assembling, Logistics,  
Commissioning and Offices



“Zero waste packaging solutions”

**SIEMENS**



# Linear Thinking and Acting



Packaging materials  
(sub-supplier)



Packaging materials  
(sub-supplier)



**SUPPLIER**

Inbound  
packaging

**SIEMENS**

Outbound  
packaging

**CUSTOMER**



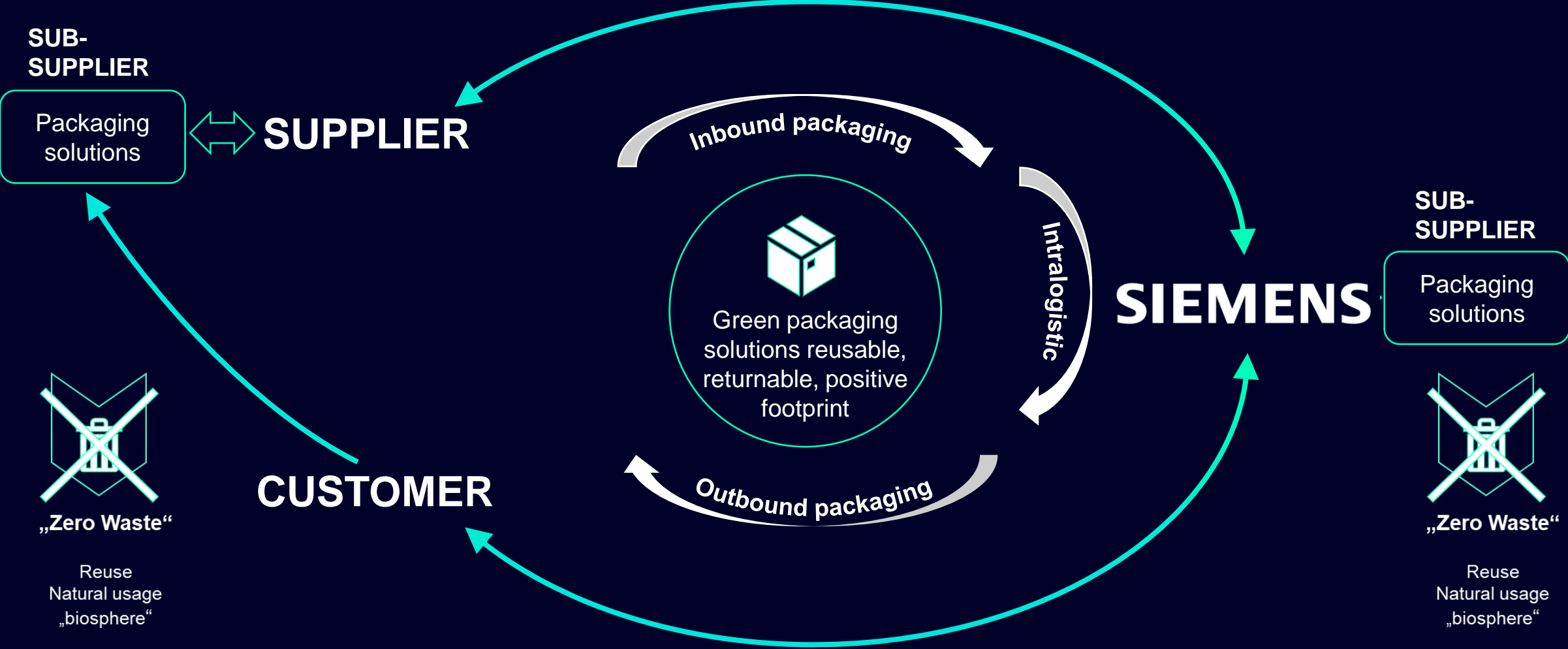
**Waste**  
(Recycling  
Incineration  
Landfill)



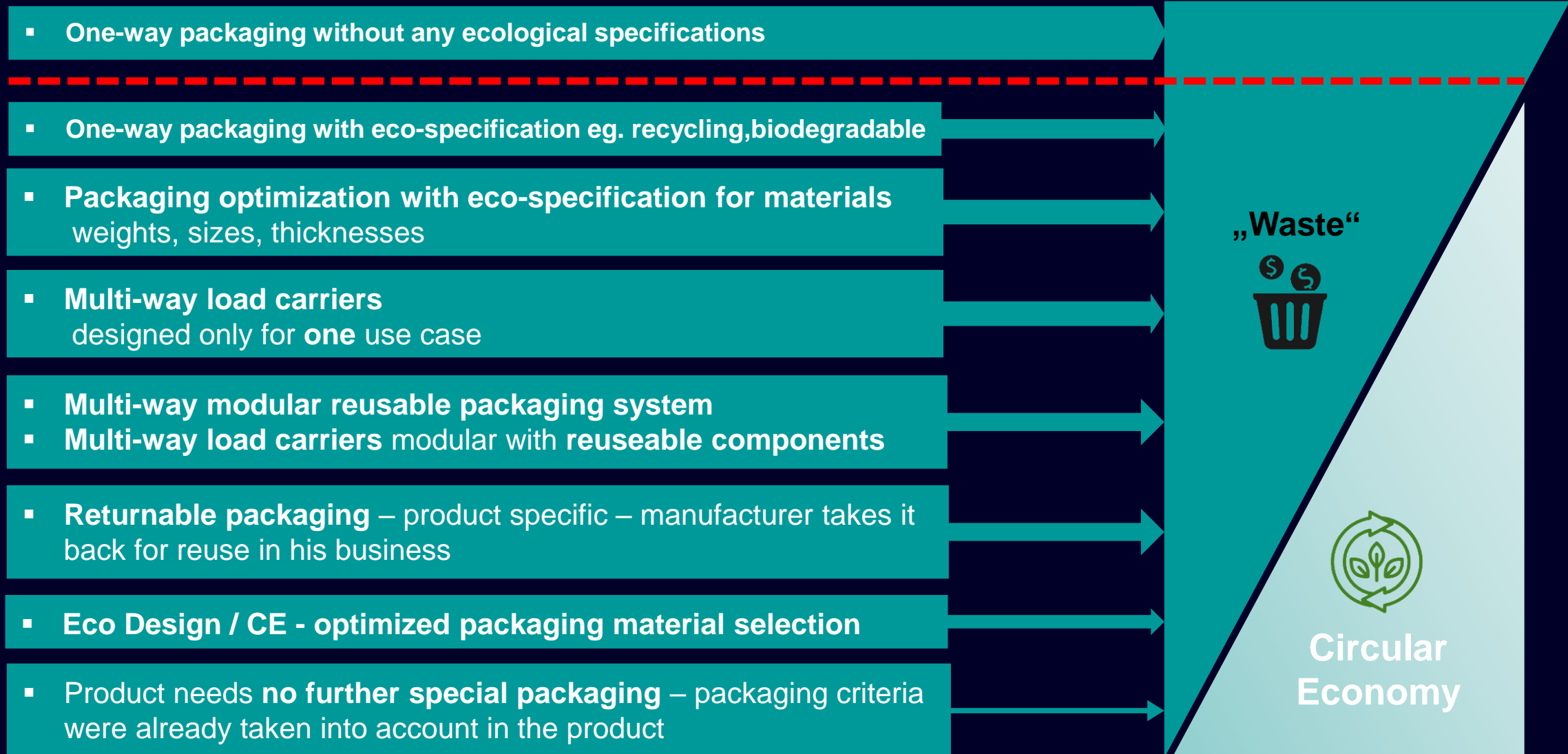
**Waste**  
(Recycling  
Incineration  
Landfill)

**SIEMENS**

# ReThink – „Collaborative Packaging Solutions“



# “Packaging Hierarchy”

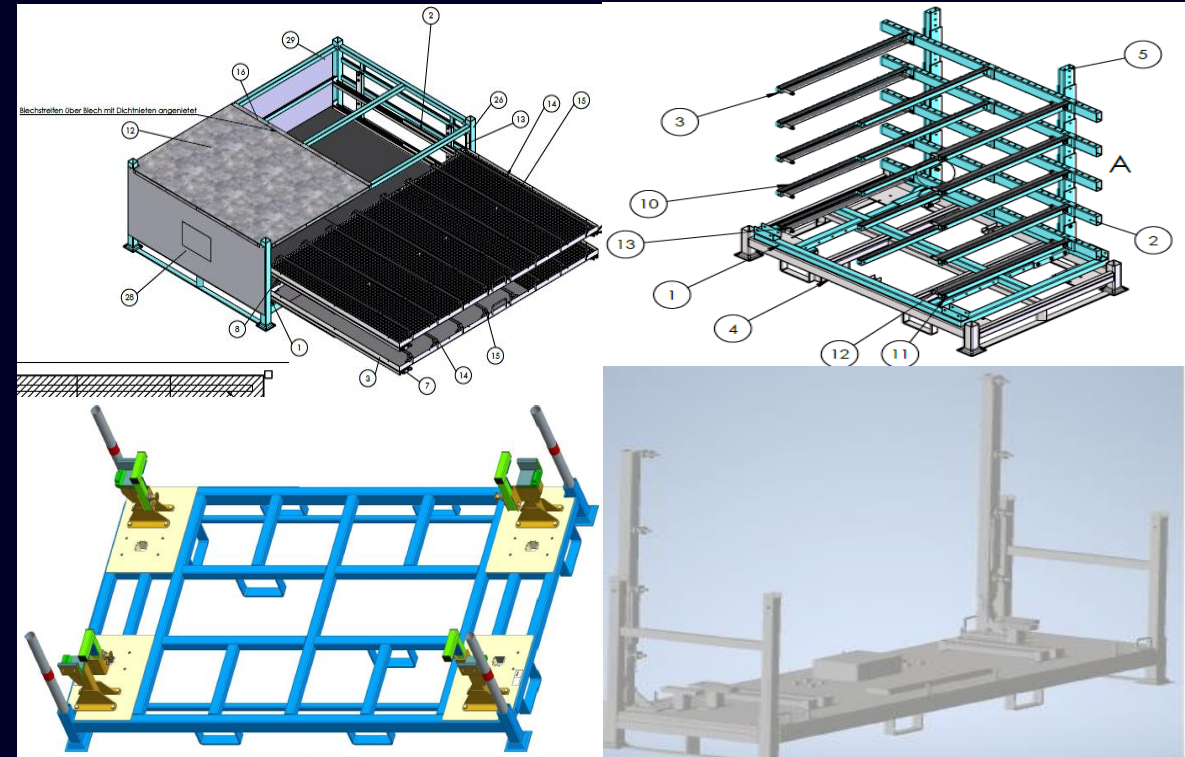


# Multi Way Load Carrier – application and usage defines solution type

Foldable reusable container made of recycled and recyable plastics



Modular multi way load carrier made of steel with partially reusable components





**Reinhard Hubmann**

[reinhard.hubmann@siemens.com](mailto:reinhard.hubmann@siemens.com)

Mobile: 0664 80117 23107

Siemensstrasse 90  
1210 Vienna

**“Being less bad is not  
being good.”**

**William McDonough**